



MVO
Martens en Van Oord

-  mvogroep
-  martens-en-van-oord
-  mvogroep
-  www.mvogroup.eu

Oosterhout
The Netherlands
+31 (0)162 47 47 47
info@mvogroup.eu

MVO
Martens en Van Oord

UNLIMITED



THE COMPANY'S PROFILE

Proficient, Committed and Pioneering

Since its founding in 1986, Martens en Van Oord has become a leading company in the Netherlands, specialized in civil engineering. The organization is innovative and diverse and excels on land, in the water and where land ends and water begins. Smart logistics and efficient deployment of construction aggregates have been key factors since the company was founded.

Martens en Van Oord is a company which is not afraid to take action. Where others hesitate, we see an opportunity. The founders envisioned three core values: the company must offer true expertise, embody a pioneering spirit and be closely involved in its projects. Every single project carried out today has these core values at its heart.

Martens en Van Oord represents a fresh and progressive approach, always investigating ways in which things can be done faster and better. The most knowledgeable person in the room? Perhaps. But one who is willing to share knowledge and doesn't mind rolling up his sleeves and getting his hands dirty. By combining various disciplines and daring to think differently, we are able to find efficient and innovative solutions which were sometimes believed to be impossible. This is thanks to an advanced equipment fleet and creative, highly qualified staff members who are continuously expanding their horizons.

Operating sustainably is a non-negotiable principle. We realize that our company works in a vulnerable world. Caring for people and the environment is a guiding principle for our organization. Acting with safety, honesty and integrity in mind forms the basis for all operations, in which profit goals and short-term benefits are never allowed to outweigh continuity and care for the environment. This family company strives for a healthy balance between business stakes and the requirements of stakeholders, including people, society and the environment.

Proficient, committed and pioneering: these are the qualities we embody, with experts who understand their profession, take responsibility, innovate constantly and operate sustainably.

This is Martens en Van Oord.

Teus and Tobias van Oord





SHARING PASSION, KNOWLEDGE AND CREATIVITY

The People who Make it

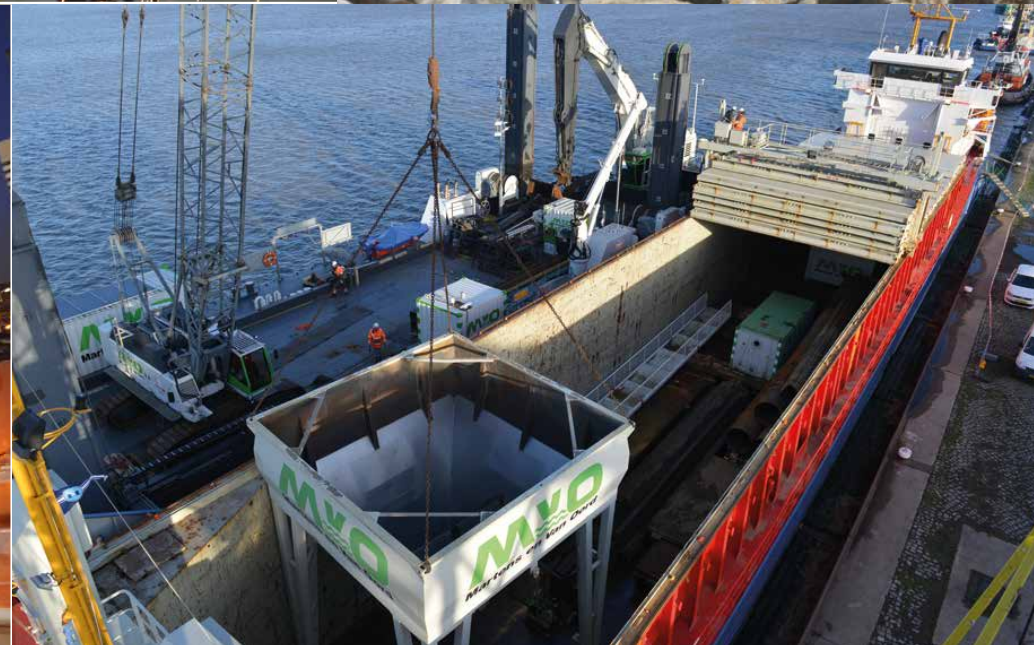
Martens en Van Oord aims to be more innovative than any other company in the industry. Machines and high-tech equipment alone cannot achieve this. In order to really stand out, the best people are needed: people with passion, knowledge and creativity, because we know that it's the staff who do our company justice. In fact, 'the People who Make it' has been the company slogan for years, as we strongly believe it is our staff who make all the difference.

Each staff member has his/her own talents. The trick is to identify these talents and encourage them to blossom. Offering opportunities for professional development based on individual skills and interests. Encouraging staff to think proactively, to make suggestions and to bear responsibility makes for engaged staff members who add value to a project. This is the underlying perspective from which we train our people.

Martens en Van Oord staff members are used to taking on various roles and working in changing circumstances and different teams. Staff members continuously expand their knowledge through various courses and trainings, in which they participate. Because our company is active in various fields of expertise, each staff member has the opportunity to expand his or her personal horizons. Our staff members are on the same page as the customer, sharing their values, concerns and objectives. But, more importantly, the staff go the extra mile, looking for solutions in unlikely places. Daring to be different and to think differently, requires courage; Martens en Van Oord greatly appreciates this quality in its staff members.

Our company employs excellent specialists, they include Environment Managers, Soil Specialists, its own Engineering Department and Surveyors. The company enjoys a process of continuous growth, both individually and together as a team. The People who Make it are to be thanked for that. They are ready to support you and they will exceed your expectations.





HIGH-TECH EQUIPMENT

Innovative in Solutions and Equipment

Pioneering entrepreneurship not only demands a lot from the people involved, but also from the equipment deployed. Martens en Van Oord could not do this without its extensive and high-tech fleet of equipment. We prefer to be as independent as possible, to carry out projects itself and does not shy away from investing in heavy equipment. We do not regard this as a risk, but as an opportunity to be able to do even more and to deliver even better results. Every investment also allows for further expansion of knowledge and expertise, so that as the company keeps developing, the customer benefits further from the expertise available.

Martens en Van Oord always works with equipment of the best quality, based on the latest technological developments. If solutions are not available in the industry, then our equipment engineers take matters into their own hands. The company has all the know-how necessary to invent and develop new equipment, leading to solutions that sometimes truly amaze the outside world when they are presented: solutions excelling in innovation, originality and efficiency. Innovation is the sail that has driven the company forward for years. Everything is done to achieve a perfect project approach every single time.

Martens en Van Oord chooses to work with white and green equipment. It literally and symbolically represents working cleanly and protecting and preserving people and the environment. Martens en Van Oord invests in environmentally friendly equipment, deployed by people who know what they are doing. It's a combination you can rely on.



'ROOM FOR THE RIVER' PROJECT DEPOLDERING THE NOORDWAARD

An enormous project with huge impact

Approximately four million cubic meters of earth moved, 30 kilometers of new quays and dikes, 45 kilometers of creeks, 26 mounds, 35 bridges, 60 hydrological engineering constructions and 50 houses and sheds to be demolished: the figures of the Noordwaard depoldering project, an area located in the Biesbosch National Park in the southern part of the Netherlands, are almost beyond human comprehension. It is an enormous project, with huge impact.

Dry Feet

The Noordwaard Polder will be flooded and reclaimed by nature across a length of ten kilometers and a width of five kilometers. This is required to ensure that residents in the vicinity are able to keep their feet dry. The water level of the nearby Merwede River will drop by no less than 30 centimeters, decreasing future risks of flooding. This reclamation is one of the largest projects in the national 'Room for the River' program, set in motion due to global warming and the subsequent rising of water levels.

Enormous Operation

In the Noordwaard polder, Martens en Van Oord is responsible for the earthmoving, demolishing the buildings and clearing and planting about 75 hectares of forest; an enormous operation. As much soil as possible is reused elsewhere in the polder, in order to limit unnecessary transport movement and environmental disruption.

Communicating Respectfully

The reclamation is a multi-year project that will have significant impact on the local residents. Farmlands are being redeveloped into nature and recreation areas, and people have to get used to this idea. Farmers who worked on their fields are now moving elsewhere or placing their farm and houses on a mound to ensure they are not flooded during high water. For Martens en Van Oord this means communicating carefully and respectfully with all stakeholders.

EARTHMOVING

DRY EARTHMOVING - NATURE DEVELOPMENT - SITE PREPARATION - DIKE REINFORCEMENTS

Our company has been an expert in earthmoving since its founding. Customers can rely on a smart approach for large projects, based on high quality and competitive pricing. We own a large, modern and sustainable equipment fleet, capable of meeting the demands for every project. Dry earthmoving, nature development, site preparation or reinforcing dikes: Martens en Van Oord takes care of it, no matter how large or complex a project is.

Our expertise translates every challenge into a smart logistics solution: one that is efficient, that takes people and the environment into account and that leads to astonishing results. The machines deliver the horsepower, the staff members the power to think creatively. It's a perfect combination.



Dry Earthmoving



Nature Development



Site Preparation



Dike Reinforcements



DEEPENING THE SUMMER BED RESERVOIR AT GRAVE

Dredging Safely in an UXO Suspicious Area

Dredging the Meuse River between the towns of Gennepe and Grave seemed fairly straightforward when the project began in 2009. Deepening the Meuse would cause high water levels to drop by 25 centimeters. This work cleared so much material, that Martens en Van Oord decided to build its own aggregates classification plant in Moerdijk in which the 2.5 million cubic meters of sand and gravel excavated during this project could be processed into high-end aggregates for construction and industrial companies

Unexploded Ordnance

Everything was going perfectly to plan until the dredging crew discovered that the bottom of the Meuse was home to quite a lot more unexploded WWII ordnance than expected. So Martens en Van Oord developed a plan for adjusting and securing the dredging process by converting the pontoon 'Roeroord' and adding extra security layers on, around and under it.

Unique Work Method

A unique new work method was born, in which the material removed from the riverbed was separated by a dynamic sieve based on particle size. The following step, the material is cleared of any possible unexploded ordnance using an electromagnet. Martens en Van Oord is certified for this new work method and is now authorised to dredge in UXO 'suspicious' areas.

Rewarded for Pioneering

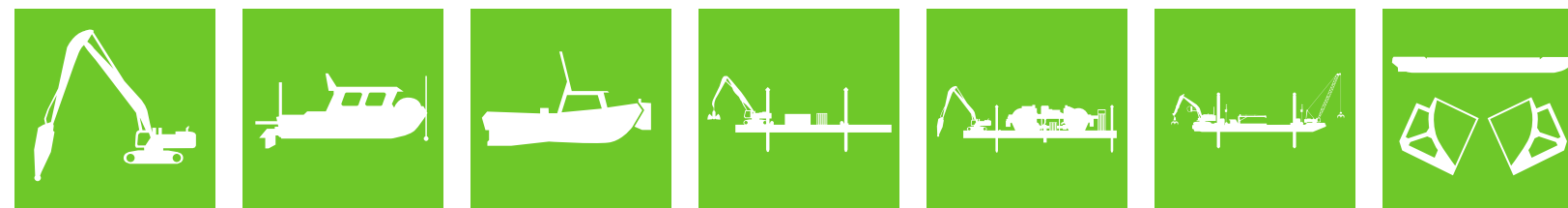
We still benefit from the aggregates classification plant built for this project. The Sand Factory in Moerdijk ensures the correct particle composition for sand and gravel, so that Martens en Van Oord can reuse this material as a high-end raw material for the concrete and asphalt industry and other relevant customers.

DREDGING

PORTS - RIVERS - MAINTENANCE - CABLES AND PIPELINES

Over the years, our company has become a leading expert in the field of dredging. Our high-tech fleet of equipment is designed for all circumstances: ports, rivers, maintenance of shipping lanes, remediation, trenches for cables and pipelines, or combinations thereof. The flexible equipment can always be adapted so that it perfectly matches the project and tasks at hand. Large projects? No problem at all.

No single dredging project is the same as the last, as each new patch of soil may contain surprises: unexploded ordnance (UXO), for instance. Our staff developed a unique, WSCS-OCE-certified work method to remain able to dredge safely even under these challenging circumstances. Once again, this is proof of the innovative spirit and distinctiveness of the company.



Ports



Rivers



Maintenance



Cables and Pipelines



FOURTH HARBOUR DOCK AT ANTWERP

Deepening the Port of Antwerp

The harbour of Antwerp needed to be deepened in order to facilitate larger ships. Martens en Van Oord took on this project which is part of a multi-year plan to fully deepen the port of Antwerp.

Dredging

In a project granted by the Antwerp Municipal Port Authority, Martens en Van Oord dredged the port that provides access to the LPG terminal. We won the project by offering the most competitive price. All in all, over 85,000 cubic meters of soil was dredged and reused in various locations throughout the Netherlands.

Self-developed Clamshell

A special clamshell was used for this project. This clamshell, developed by Martens en Van Oord, is highly suitable to separate various soil types; in this case sand and sludge. It is another example of the expertise we possess when it comes to developing equipment. The sludge was transported to the Slufter at the Maasvlakte near Rotterdam, while the sand was reused in other Martens en Van Oord projects.

Additional Qualities

Although dredging itself is virtually the same in every country, working internationally does present different challenges. Understanding a different culture and different working methods are two important aspects. With respect to these challenges, we succeeded in Belgium and completed the project to the full satisfaction of the customer.

REMEDICATION

SOIL - WATERBED

Remediation is an expertise for which knowledge is an obvious condition. Over the years, the company has proved that we possess this knowledge. In countless locations, both dry and wet, Martens en Van Oord has helped its customers to carry out remediation projects. Martens en Van Oord is certified for carrying out soil and waterbed remediation projects. The company distinguishes itself from others by using high-end equipment (including level-cut clamshell grabs). We have the right processing methods and disposal locations in place and participate actively in the thought processes of other parties, from the customers themselves to the permit authorities. At Martens en Van Oord, your remediation project is in safe and experienced hands.



Soil



Waterbed



COAST AND SHORE PROJECTS

NEW CONSTRUCTIONS - SHORE CONSTRUCTIONS - MAINTENANCE - PORTS

Martens en Van Oord feels at home in the area where land ends and water begins – or the other way around, depending on how you look at it. No wonder the company specializes in coast and shore projects. These are often directly connected to dredging tasks and dike reinforcements, areas in which we have a longstanding proven track record. For many large-scale projects revolving around water safety and water management, all these individual areas of expertise must be mastered in order to ensure success.

Martens en Van Oord has the knowledge, skills and equipment to carry out a large range of coast and shore projects. The equipment, dry or wet, is ready for the most complex of projects. Whether this includes new constructions, maintenance or building shore constructions such as fascine mattresses and revetments, you can rely on us, especially where land meets water.

ENVIRONMENTALLY FRIENDLY BANKS OF THE MEUSE

Efficient Reuse of Construction Aggregates

The improvement of local riverside ecology is an important objective for the ‘Environmentally Friendly Banks of the Meuse’ project led by the Directorate-General for Public Works and Water Management, Rijkswaterstaat. The Sand Martin needs to be encouraged to return to breed on the banks of the Meuse River in the foreseeable future. The Common Kingfisher should start building its nests there again, and beavers should once again be seen visiting the river water. Martens en Van Oord was selected to complete the first tranche of this project.

Four Objectives

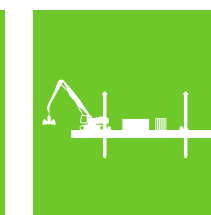
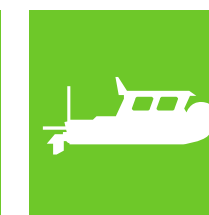
In addition to restoring the habitats for plants and animals, three other objectives apply: improving water quality, increasing flood protection and creating an appealing river landscape. Some 260 kilometers of the banks of the Meuse River are to be redesigned. Martens en Van Oord was granted the first tranche of this project based on best price and quality combination.

Smart Plan

Over 36 kilometers of riverbank was to be worked on between the Dutch towns of Boxmeer and Ammerzoden. We had to work with thirteen municipalities, three provincial governments and a large and varying group of other collaborators. Our plan excelled in sustainability, keeping environmental nuisance to a minimum and allowed for an astute approach to a complex permit procedure.

True Specialist

We also succeeded in either reusing the construction aggregates excavated while working on the riverbanks, or reselling them on the market. In this process, Martens en Van Oord proved to be a true specialist in carrying out coast and shore projects. The company takes pride in being as capable both on land and in the water.



New Constructions



Shore Constructions



Maintenance



Ports



BALTIC SEA NEAR ROSTOCK, NORTH GERMANY

The 'Scheldeoord' Pontoon in the Baltic Sea

Under normal circumstance, the boulders on the bottom of the Baltic Sea don't cause much trouble for anybody. All that changed however, when a new wind farm was to be built here. In order to connect the wind turbines to the German high voltage network with an underground power cable, the seabed had to be cleared. A perfect job for Martens en Van Oord.

Scheldeoord: Strong and Flexible

The 'Scheldeoord' pontoon was shipped to the Northern German coast by Martens en Van Oord to carry out this project. This pontoon, built in 2013, measures 60 meters in length and 15 meters in width and is both strong and flexible. The pontoon can carry machines of up to 250 tonnes both at the front and at the back. At the same time, the Scheldeoord can use its own thrusters to accurately maneuver in any direction. The pontoon has four spud poles, including a spud leg able to 'walk'. This pole can move the pontoon in steps of eight meters.

Full Spectrum of Equipment Parts

The multifunctional pontoon was prepared by our expert equipment-engineers in short time. A full spectrum of specially developed equipment parts was taken on board for the journey to Germany, including a heavy round nose grab, an underwater hydraulic demolition hammer and a stone grabber. Around 1,000 stones were removed over a length of 35 kilometers, while dredging tasks were also carried out in places where the seabed was very hard.

Additional Expertise

Working at sea demands experience, additional expertise and highly qualified staff members. Safety is the highest priority for these projects. The customer was delighted with the work delivered by Martens en Van Oord in the Baltic.

OFFSHORE

DREDGING - SUSTAINABLE ENERGY - CABLES AND PIPELINES - MARITIME SERVICES

Martens en Van Oord excels both on land and in the water, and as the offshore industry forms an ultimate combination of these two fields of expertise, it is obvious that 'offshore' is a fully-fledged company division. Our company is an expert in coastal projects, such as dredging sea ports, but also excels at work carried out in the open sea. Martens en Van Oord has all the knowledge and equipment to make a competitive offer for projects in shallow water. The ability to work in very shallow water is our specialty. Projects in this category include installing cables and pipelines for wind farms, dredging work or providing hoisting assistance at gas platforms.

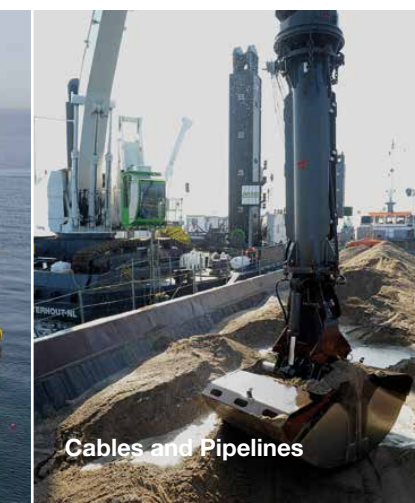
Being relatively new in the open sea, we offer our customers a new, progressive and refreshing approach to projects. We have the courage to think beyond the conventional ways of doing things, and we always want to complete projects more resourcefully than anybody else. This requires a different approach. We construct while unburdening our clients, whether on land or at sea. After all, being highly involved with the customer is something completely compatible to our company's policies.



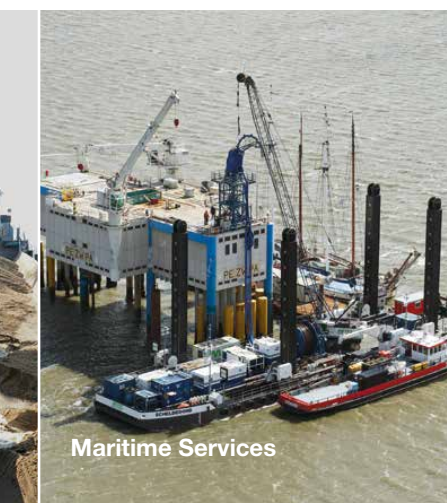
Dredging



Sustainable Energy



Cables and Pipelines



Maritime Services





ROTTERDAM MARKTHAL

A New Icon for Rotterdam

Rotterdam, the city of modern architecture, has gained another icon: the Markthal. This eye-catching design will become a new landmark in the city center. In addition to an indoor market where fresh produce is sold, the Markthal is also home to cafes, restaurants, shops, over 200 apartments and a 1,200-space car park. All these components are integrated into a striking building that somewhat resembles a gigantic airplane hangar. It's a true new icon for the Rotterdam city center.

Large Numbers, Great Accuracy

Completion of the underground four-story car park was carried out by Martens en Van Oord mostly. It was a project involving large numbers, including 150,000 cubic meters of earthmoving, 2,500 thrust and tension piles, and 16,000 cubic meters of underwater concrete, but also one where a high degree of accuracy and sophisticated working methods were absolutely vital.

State-of-the-Art Equipment

In order to be able to work as accurately as possible, Martens en Van Oord used state-of-the-art equipment. In order to position the equipment during the excavations – the piles were already driven into the ground – both U.S. and Russian satellite systems were used. At the same time, cranes were used in line with a PDS-2000 equipment tracking system, which measures and registers every movement in real-time under water level and thus actively prevents even the slightest damage occurring to anything.

A Great Advertisement

From excavating the dry top layer to removing the clay, peat and sludge between the 2,500 piles, we found bold and customized solutions time and time again. Completing the work on the Markthal car park is therefore a great advertisement for Martens en Van Oord, proving that the company certainly knows what it's doing when it comes to underground and underwater expertise.

SPECIAL METHODS

CONSTRUCTION PITS - GEOSYNTHETIC STRUCTURES

The Netherlands is a densely populated country with relatively high land prices. This is why new constructions increasingly take place underground, including developments such as underground car parks, basements and tunnels. These are complex projects, requiring specialized knowledge and earthmoving, logistics and water management expertise. Looking at Martens en Van Oord's services, it is no surprise that the company is often requested to carry out these challenging and unique underground projects.

Martens en Van Oord is a specialist in excavating wet construction pits, from the shore or a pontoon, either before or after sheet pile-driving takes place. As an alternative to sheet piles or underwater concrete, a balanced Geosynthetic structure can also be used. Our company has vast experience using these unique methods.



Construction Pits



Geosynthetic Structures



ROAD CONSTRUCTION

NEW CONSTRUCTION - RESTRUCTURING

A good, durable road cannot be built without a solid surface supporting it. We have proven to be a shrewd and reliable partner for road construction projects. Using the company's internal resources, we can carry out complete entire solutions from the surface to the asphalt, concrete or the bricks. Projects carried out by Martens en Van Oord can always be recognized by the company's specific signature: the incredibly efficient application of construction aggregates.

The synergy between the various company activities in which Martens en Van Oord specializes really comes into its own during large road construction projects. Construction aggregates are always used efficiently: by reusing materials on location, by creating smart links with other projects or by using residual materials from production processes, such as thermally cleaned sand or ashes remaining from waste incinerators. These solutions are always affordable and sustainable, something for which Martens en Van Oord is well known in the Netherlands.

CITY RING ROAD; THE 'BURGEMEESTER LETSCHERTWEG

Traffic Nuisance in Tilburg Resolved

Tilburg is a growing city in the south of the Netherlands, and one that has been combatting traffic nuisance for years. A significant solution was found by constructing a ring road around the city. Martens en Van Oord greatly contributed to the last segment of this ring road, a local road called 'Burgemeester Letschertweg'. A unique aspect of this approach was the application of construction aggregates, in which efficiency, recycling and high quality for low prices had the highest priority.

A Traffic Bridge and a Wildlife Bridge

The two-lane Tilburg ring road to which we contributed, added a finishing detail to the city. Two bridges were also built over the Wilhelmina Channel. In addition to a bridge for traffic, another bridge was built for local wildlife, so that animals could cross the road and the Wilhelmina Channel safely.

Construction Aggregates used Innovatively

We have distinguished ourselves during the project by using highly efficient construction aggregates. These originated from various locations, including the sand depot of the Municipality of Tilburg, sand excavated from the Hollandsch Diep River housed in the dredging mud depot managed by Martens en Van Oord and thermally cleaned sand from waste processor firm AT.

Minimum Nuisance

It was a challenge to transport all these construction aggregates to Tilburg while limiting costs and fuel usage. A large amount of these construction aggregates was delivered by ship, for which we constructed a temporary handling pier close to the new bridge over the Wilhelmina Channel. This helped us keep environmental impact to a minimum, while Martens en Van Oord's excellent logistical expertise proved to be indispensable once again.



New Construction



Restructuring



RAILWAY CONSTRUCTION

NEW CONSTRUCTION - RESTRUCTURING

Martens en Van Oord is an ideal partner for new railway constructions or restructuring existing routes. Projects such as the Betuwe Route and Hanze Line prove that we are the perfect partner for railway projects. This is clear from our solid logistical process, rapid work method, specially developed equipment and the sensitivity to plan together with the customers in every project phase.

These attributes allow us to achieve great results while working on tightly-spaced railways and under the immense time pressure often associated with these projects. One innovation is the 'steel highway', a system with large, extra wide steel plates. It protects the soil underneath, is environmentally friendly and can be installed quickly. Other methods especially developed for railway constructions are the side-feeder on the shovel and the special bulldozer blade. Pioneering solutions are typical Martens en Van Oord solutions.

THE HANZE LINE

Sustainable Work Method Hanze Line

It is a continuous challenge in the Netherlands: how can travel times between the various parts of the country be reduced even more? The Hanze Line, commissioned in late 2012, was a new step forward. This brand new railway track between the cities of Lelystad and Zwolle instantly and significantly shortened the travel times between northern and northeastern Netherlands and the Randstad in the central-west Netherlands.

Praise

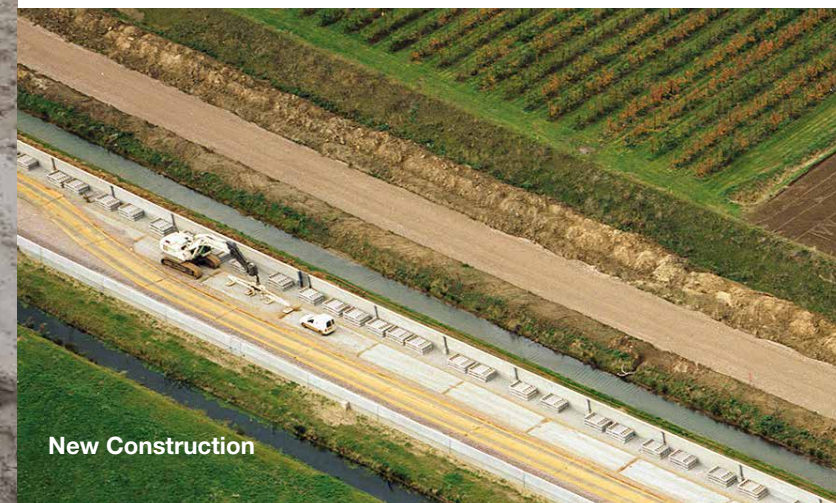
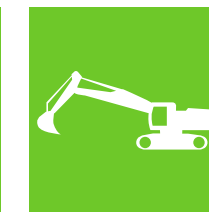
Martens en Van Oord contributed to the construction of the Hanze Line by profiling the sand beds, the railway bed and positioning the sleepers. The sustainable way in which this was carried out was singled out for praise.

Steel Highway

The most notable example of our innovative working methods is the 'steel highway', a row of large steel plates (12 x 3.5 meters) used by trucks to deliver construction materials and dispose of waste materials. It is a method we often use, as this 'highway' greatly reduces fuel usage and maintains the quality of the railway bed which has already been constructed, and is so resourceful and unique that Martens en Van Oord even owns a patent to it.

Flexible and Involved

Customer HanzaRailTeam described Martens en Van Oord as a 'great team to work with'. According to the customer, we delivered quality with a sustainable work method. Furthermore, we were described as being flexible, cooperative and involved. "You can feel that they have a great mentality, powered by the joint vision of: we are going to do this and do it together", the customer reflected afterwards: pretty much the best possible recommendation a company could receive.



New Construction



Restructuring



FUEL AND RESIDUAL MATERIAL HANDLING FOR THE AMER PLANT IN GEERTRUIDENBERG

Logistics Taken Care of by Knowledge

Our cooperation with Essent Energy Corporation, part of the international energy conglomerate RWE near the Amer Plant in Geertruidenberg is an excellent example of how Martens en Van Oord is able to fully care for every aspect of the customer's logistical issues. For Essent, we carry out all logistics for bulk processes in the power plant. This allows Essent to focus on its primary task: generating power.

Transport and Servicing

We carry out all transportation movements for residual materials from the incineration process at this coal and bio-fuel power plant. Our company also services the various machines regulating the intake and outflow to the plant. Approximately 9,000 tonnes of coals are incinerated at the Amer Plant every day, after which large quantities of gypsum, fly ash and bottom ash remain. These residual materials are then used as aggregates for the construction industry.

Unique Co-Incinerator

The Amer Plant is partially powered by biomass. This is not limited to the biomass plant alone, as a special bio co-incinerator was developed by Martens en Van Oord. This unique system mixes coal and biomass, which are then incinerated together. It's a new step along the road towards more sustainable power generation.

Highly Flexible

Thanks to our fleet of state-of-the-art equipment, the knowledge available in the organization and high staff involvement, we are able to act extremely flexibly at the Amer Plant, which is an absolute must as the plant must always remain productive. The long-term cooperation with Essent proves that Martens en Van Oord is also an ideal partner for any project involving large responsibility.

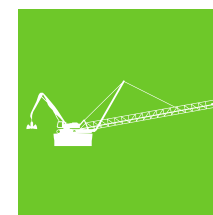
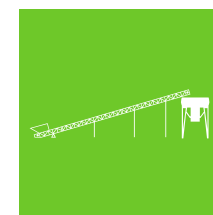
LOGISTICS

WATER TRANSPORT - ROAD TRANSPORT - HANDLING LOCATIONS - LOGISTICS SERVICES

Martens en Van Oord is known for its cost-efficient and environmentally friendly logistics solutions. Within our company, these logistics solutions form the connecting element, which binds all the various areas of expertise and projects.

Martens en Van Oord always opts for resourceful combinations of transportation by water and by road. Water transport is often the most sustainable solution, which causes less impact on for the environment. The company also possesses its own fleet of trucks, carrying out the remaining transport tasks. This guarantees cost-efficient and fully customized transport solutions for every project.

As an expert in logistics, Martens en Van Oord provides complete logistic bulk processes for companies located in industrial environments. We possess the equipment, the knowledge and the flexibility to help take some of the load off of these customers and allow them to focus on their core business.



Water Transport



Road Transport



Handling Locations



Logistics Services



THE MOERDIJK SAND FACTORY

High Quality Production at an Ideal Location

The Sand Factory owned by Martens en Van Oord is located in the Moerdijk industrial area. The aggregates classification plant processes sand and gravel into high-end building materials, for instance used by the concrete industry. The plant is also suitable for cleaning used materials such as rail ballast. The Sand Factory is part of the hypermodern bulk and building material terminal in Moerdijk and is fully owned by our company.

Perfect Location

The terminal also serves as a handling location for high-end bulk goods and building materials. Martens en Van Oord shares the handling location with OBM (Overslagbedrijf Moerdijk), a 50% subsidiary of the company. The location in Moerdijk is perfectly accessible for both inland and maritime ships and is also located right next to a highway and a railway. The combination of this location at the juncture of water, rail and road facilities offers great logistical flexibility.

Useful Purpose

The concept for the Sand Factory was initiated during two projects carried out by Martens en Van Oord in the Meuse River. While deepening that river between the towns of Gennepe and Grave and another segment between Venlo and Arcen, seven million tonnes of sand and gravel were excavated. And of course, we would not be who we are if a useful purpose for that material was not found. That purpose resulted in the new Sand Factory.

High Quality Product

Using the aggregates classification plant, Martens en Van Oord is able to deliver products perfectly tailored to the customer's specifications. Sand and gravel are separated at the beginning of the process, after which they are sorted into four partial fractions: between 0 and 2 millimeters for sand, and between 2 and 32 millimeters for gravel. These semi-finished materials can be mixed to a very high-quality product after which they are returned to the delivery chain.

CONSTRUCTION AGGREGATES

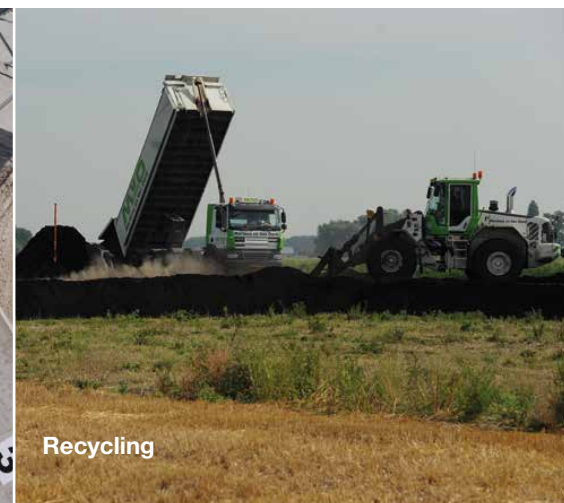
PRIMARY AGGREGATES PRODUCTION AND DELIVERY - RECYCLING - SOIL INTAKE

Construction aggregates are becoming increasingly scarce, creating a need for more resourceful solutions. Martens en Van Oord specializes in these solutions and takes pride in its reputation of utilizing aggregates up to the very last particle. Anything that cannot be recycled during projects is offered on the market. The intake of construction aggregates is carried out frequently, and thus trading activities surrounding raw materials are growing quickly. Combined with the logistical knowledge and vast expertise in aggregates, we seek to provide resourceful and sustainable solutions at low prices.

In the aggregates classification plant in Moerdijk, called the Sand Factory, Martens en Van Oord separates and classifies the highest grades of sand and gravel, for every desired particle size. The company has a broad selection of primary and secondary building materials available, including thermally cleaned sand, incinerator bottom-ash and the exclusive light-weight backfill material Granulight®.



Primary Aggregates Production and Delivery



Recycling



Soil Intake



EQUIPMENT DEVELOPMENT AND SALES

Innovation is incredibly important to us, proof of which is found in our skills and expertise in the field of development and sales of equipment. Being ahead of the curve, often translates into high requirements on tools and equipment. Martens en Van Oord therefore does not shy away from significant investments in equipment if projects require them. A team of mechanical engineers is working fulltime to develop equipment. We are able to combine various techniques and technologies, often supplemented with our own engineering that lead to the best possible solutions. Reliability, capacity and safety are top priorities in this process, while sustainability has grown to become another pillar on which the development of new work methods rests. The Equipment Engineering Department within Martens en Van Oord possesses the know-how, experience and software needed for pioneering solutions. These solutions consider all relevant factors: developing special work methods, designing and constructing the required equipment and monitoring project execution. Based on the adventurous and innovative mindset within our company, we are often able to amaze the outside world and our customer, with the equipment and work methods applied.

LAKE BOYUKSHOR, BAKU, AZERBAIJAN

A Contaminated Lake Next to a Formidable Stadium

The Azerbaijani capital Baku was the host for a unique sports event in June 2015: the first edition of the European Games. Specially for this event, a new Olympic stadium is built in Baku. This impressive stadium is founded on the shores of Lake Boyukshor, which was in a poor ecological state.

Joint Venture

Before this large sports event could commence, the water quality in the lake must be at an acceptable level. This is why Martens en Van Oord and Baars Confloat were asked by our customer in Baku to assist in getting this accomplished. The two companies entered the 'Boyukshor Lake' joint venture for this purpose, designing, manufacturing and selling the equipment to the customer. The joint venture also provided guidance during project execution.

Sharing Knowledge

The customer was Tamiz Shahar, a governmental institution in Azerbaijan primarily focused on processing waste materials. The joint venture did not leave Tamiz Shahar to deal with it. Martens en Van Oord is an involved company which is happy to share its knowledge with its partners and clients in order to achieve maximum results together. This led to the joint venture providing knowledge and people for this unique project.

Much Contaminated Sludge

No less than 2.8 million cubic meters of contaminated sludge was dredged from Azerbaijan's second largest lake. This sludge is shipped to a separate dump where the sludge can settle and the clean water flow back into the lake through a spillway. All this work ensured that Lake Boyukshor is now considerably cleaner for the European Games.

